

MONUMENT

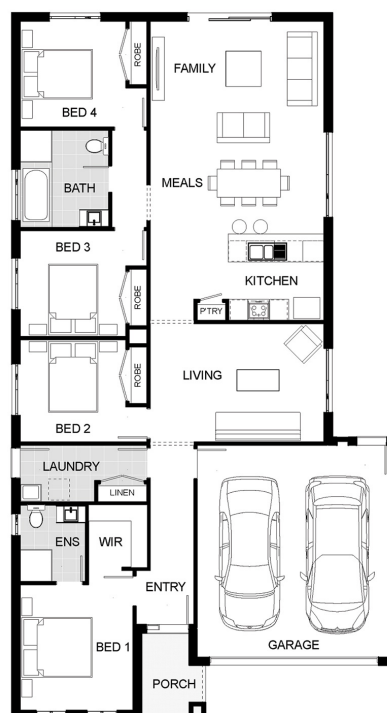


H6 UP JG KING HOMES \$555,234

LOT 114
AREA: 400m²
FRONTAGE: 12.5m
DEPTH: 32.00m

Inclusions

PRECISION ENGINEERED BLUESCOPE STEEL FRAME
20MM ESSA STONE BENCHTOPS TO KITCHEN, ENSUITE AND BATHROOM
FLOOR COVERINGS-TIMBER LAMINATE / CARPET AS NOMINATED.
UP TO 25 LED LIGHT UPGRADE
2550MM CEILING HEIGHT UPGRADE
STAINLESS STEEL 600MM APPLIANCES
SOLAR HOT WATER SYSTEM
COLORBOND ROOF
PLAIN CONCRETE DRIVEWAY
6 STAR ENERGY RATING
BUSHFIRE ATTACK LEVEL 12.5 INCLUDED
50 YEAR STRUCTURAL WARRANTY*



Call 1300 040 563
Visit Our Sales Suite Open 7 Days 11am-5pm
1392 PLUMPTON RD, PLUMPTON
monumentplumpton.com.au

Resi Ventures **red23**
Creating Prosperity

WHILE BEST ENDEAVOURS HAVE BEEN USED TO PROVIDE INFORMATION IN THIS PUBLICATION THAT IS TRUE AND ACCURATE, MONUMENT PLUMPTON, ITS CONSULTANTS, AGENTS AND RELATED ENTITIES ACCEPT NO RESPONSIBILITY AND DISCLAIM. ALL LIABILITY IN RESPECT TO ANY ERRORS OR INACCURACIES IT MAY CONTAIN. PROSPECTIVE PURCHASERS SHOULD MAKE THEIR OWN ENQUIRIES TO VERIFY THE INFORMATION CONTAINED HEREIN.